



May 25, 2018

Dear Cottrell Equipment Owner:

Please find Service Bulletin #SB024 enclosed which contains instructions for the inspection and reinforcement of the Cantilever headramp side frame.

Our records indicate that you are the current owner of a Cottrell unit (or multiple units) that may be affected by Service Bulletin #024. The serial number(s) of your unit(s) are indicated on the enclosed sheet. If you no longer own the units identified on the enclosed sheet, please indicate the new owner and return it to us at the email address below:

Warranty@CottrellTrailers.com
Attn: Technical Publications

Reference the SB#024 Cantilever Headramp Side Frame reinforcement service bulletin and drawings attached. Once you have inspected the selected areas pointed out in drawing, please contact Cottrell for reinforcement parts to be sent to you.

Austin Peal
800-827-0132 Ext 313
Apeal@CottrellTrailers.com

The Cottrell Service Center or any Authorized Cottrell Warranty Repair Facility may perform the repair for you. You can access a list of these repair facilities at www.cottrelltrailers.com under Find a Dealer.

Cottrell will reimburse a maximum of 5 hours of labor per headramp reinforced for the work associated with this Service Bulletin #024. Requests for reimbursement can be submitted with receipt to the above address or handled directly through the repair facility under normal procedures.

Please read Service Bulletin #024 and have the repair completed as soon as possible according to the instructions provided. This Service Bulletin #024 shall remain open for one (1) calendar year.

Should you have any questions concerning this bulletin, please contact Cottrell.

Sincerely,
Austin Peal / Warranty Coordinator
apeal@cottrelltrailers.com
800-827-0132 Ext. 313



May 25, 2018

Service Bulletin #SB024

Subject: Cantilever Headramp Side Frame Reinforcement

Models Affected: Units listed in enclosed document

Instructions:

1. Contact Cottrell for parts for reinforcement kit.
2. Schedule unit for repairs at the Cottrell Service Center or any Authorized Cottrell Warranty Repair Facility for Service Bulletin.
3. Have repair center inspect selected points for cracks per inspection drawing.
4. If cracks are present, gouge and weld up cracks.
5. Install reinforcement kit per drawing
6. Touch up reworked areas

4

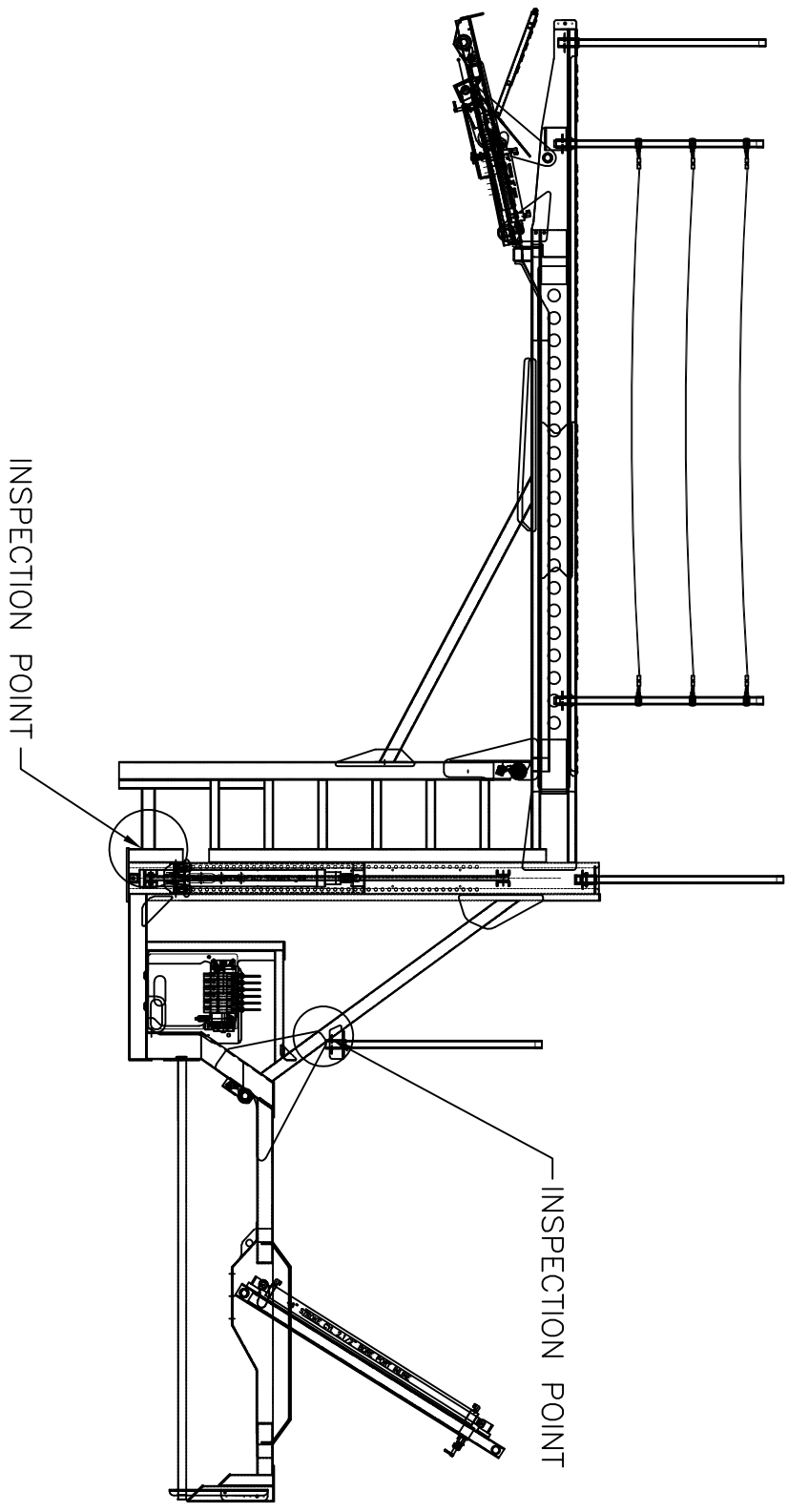
3

2

1

- NOTES:
1. CHECK INSPECTION POINTS FOR CRACKS,
 2. IF CRACKS ARE PRESENT, GOUGE OUT AND WELD THE CRACKS.
 3. INSTALL PARTS PER KIT DRAWING.

ECO NUMBER	ZONE	REV	REVISION-DESCRIPTION	DATE	BY	CHECKED
C25690						



C

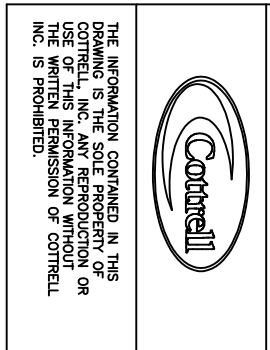
B

A

C

B

A



THE INFORMATION CONTAINED IN THIS DRAWING IS THE SOLE PROPERTY OF COTTRELL, INC. ANY REPRODUCTION OR USE OF THIS INFORMATION WITHOUT THE WRITTEN PERMISSION OF COTTRELL, INC. IS PROHIBITED.

STANDARD TOLERANCES UNLESS OTHERWISE NOTED
 DEGREES: ±.2
 FRACTIONS: ±1/16
 DECIMALS: ±.060
 .XX ±.030
 .XXX ±.010

ORIG BY: DST	PROG. NO. —	MATERIAL —	MATERIAL DESCRIPTION —	SIMILAR TO —	SCALE 1:1
ORIG DATE: 5/3/2018	PROG. BY —	MAKE FROM —	PART YIELD —	DWG. NO. —	SIZE A
CHK BY: —	PROG. DATE —	FINISH —	WEIGHT —	PART NO. 154591	REV IR
CHK DATE: —	TITLE INSPECTION DRAWING				

4

3

2

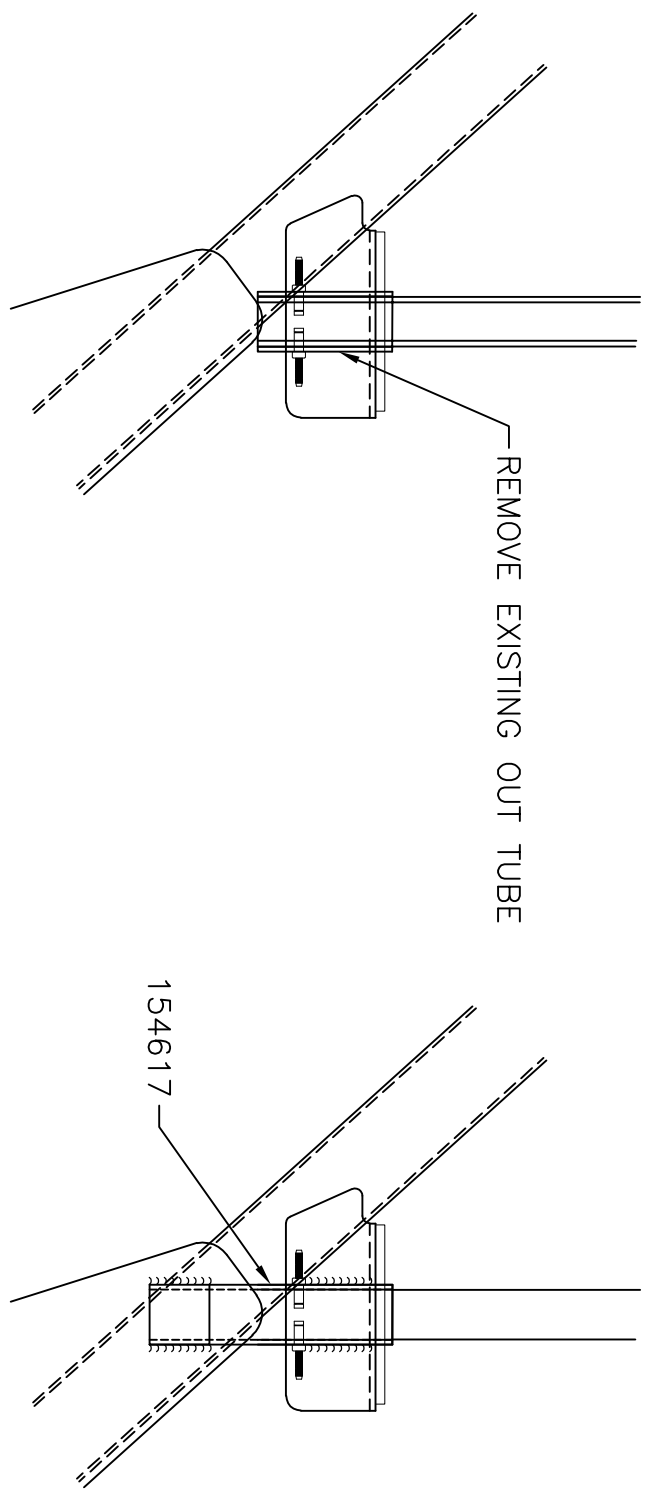
1


SHEET 1 OF 1

4 3 2 1

ECO NUMBER	ZONE	REV	REVISION-DESCRIPTION	DATE	BY	CHECKED
C25690						

- NOTES:
1. REMOVE EXISTING TUBE.
 2. REPLACE WITH LONGER TUBE AS SHOWN.



 <p>THE INFORMATION CONTAINED IN THIS DRAWING IS THE SOLE PROPERTY OF COTTRELL, INC. ANY REPRODUCTION OR USE OF THIS INFORMATION WITHOUT THE WRITTEN PERMISSION OF COTTRELL, INC. IS PROHIBITED.</p>	STANDARD TOLERANCES UNLESS OTHERWISE NOTED DEGREES: ±.2 FRACTIONS: ±1/16 DECIMALS: ±.060 .XX ±.030 .XXX ±.010		ORG. BY: DST ORG. DATE: 5/4/2018	PROG. NO. — PROG. BY — PROG. DATE —	MATERIAL — MAKE FROM — FINISH —	MATERIAL DESCRIPTION — PART YIELD — WEIGHT —	SIMILAR TO — DWG. NO. —	SCALE 1:1 SIZE A
	TITLE HAND RAIL REINFORCEMENT		CHK. BY: — CHK. DATE: —	PART NO. 154618	REV IR			

4 3 2 1

4

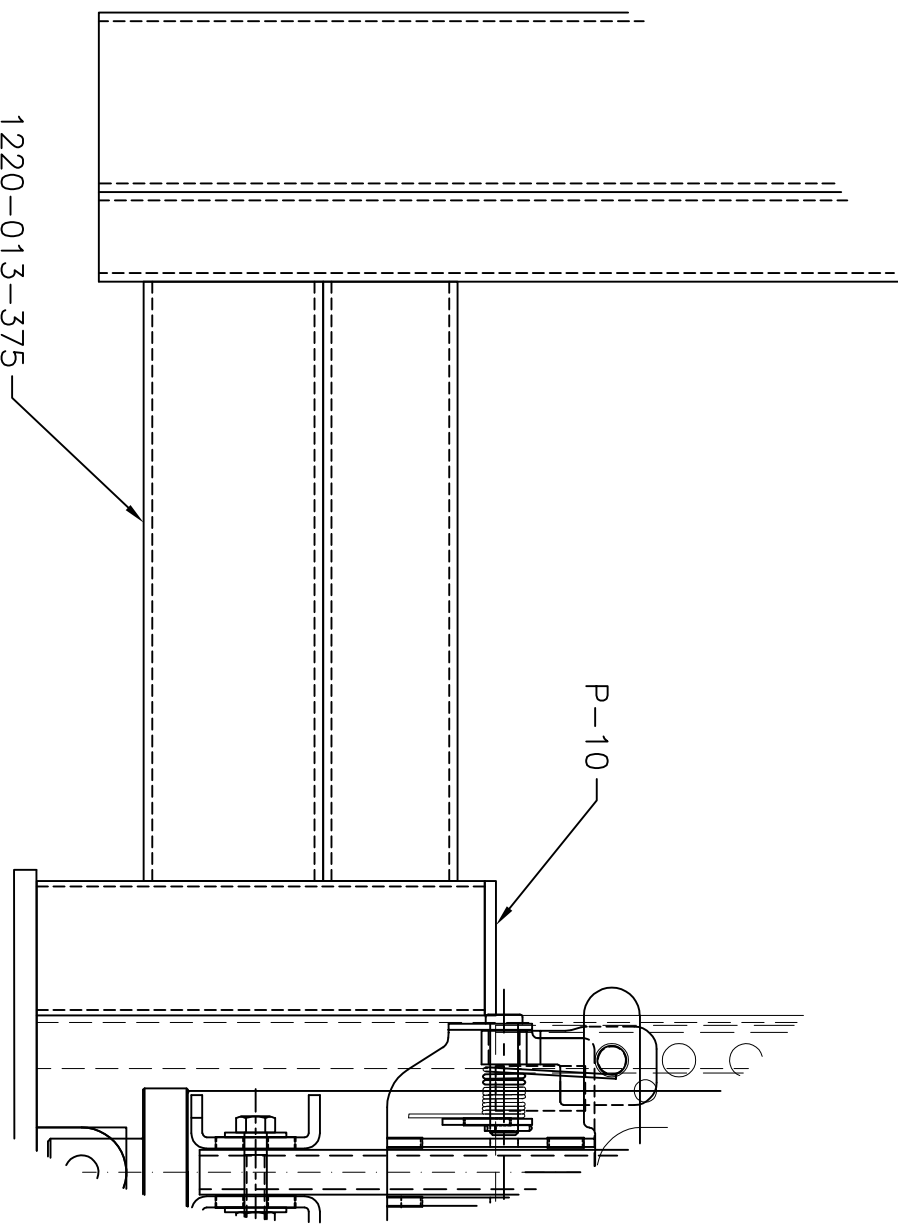
3


2

1

- NOTES:
1. GOUGE OUT AND WELD UP CRACKS.
 2. ADD PARTS AS SHOWN.

ECO NUMBER	ZONE	REV	REVISION-DESCRIPTION	DATE	BY	CHECKED
G25542						



	STANDARD TOLERANCES UNLESS OTHERWISE NOTED DEGREES: FRACTIONS: 1/16 X ± .060 XX ± .030 XXX ± .010		ORG BY: DST ORG DATE: 4/11/2018	PROG. NO. — PROG. BY — PROG. DATE —	MATERIAL — MAKE FROM — FINISH —	MATERIAL DESCRIPTION — PART YIELD — WEIGHT —	SIMILAR TO — DWG. NO. —	SCALE 1:1 SIZE A
	THE INFORMATION CONTAINED IN THIS DRAWING IS THE SOLE PROPERTY OF COTTRELL, INC. ANY REPRODUCTION OR USE OF THIS INFORMATION WITHOUT THE WRITTEN PERMISSION OF COTTRELL INC. IS PROHIBITED.	CHK BY: — CHK DATE: —	TITLE KIT BOTTOM RAIL	PART NO. 154339	REV IR			

4

3

2

1

SHEET 1 OF 1