



November 18, 2011

Dear Cottrell Equipment Owner:

Please find enclosed Service Bulletin #SB012 which contains instructions for inspecting and possibly replacing the skid roller flange bolts on certain configurations of the bottom, rear-most deck of the trailer.

Our records indicate that you are the current owner of a Cottrell Trailer (or multiple trailers) that may be affected by Service Bulletin # SB012. The serial number(s) of your trailer(s) are indicated on the enclosed sheet. If you no longer own the trailer(s) identified on the enclosed sheet, please indicate the new owner in the "sold to" section of the enclosure and return it to us at the address below:

Cottrell, Inc.
2125 Candler Road
Gainesville, GA 30507
Attn: Technical Publications

The Cottrell Service Center (800-827-0132), Authorized Cottrell Dealers, or any Authorized Cottrell Warranty Repair Facility may perform the installation for you. You can access a list of these facilities at www.cottrelltrailers.com under Service Centers.

Parts required to perform Service Bulletin #SB012 are available through Cottrell Parts Supply (800-827-0132) or from any Authorized Cottrell Dealer.

Cottrell will reimburse a maximum of 1.0 hour of labor per trailer modified at a maximum rate of \$75.00 per hour for the work associated with this Service Bulletin. Requests for reimbursement can be submitted with receipt to the above address or handled directly through the repair facility under normal procedures.

Please read Service Bulletin #SB012, inspect the trailer(s), and install the kit(s) as soon as possible according to the instructions provided. This Service Bulletin shall remain open for one (1) calendar year.

Should you have any questions concerning this bulletin, please contact Cottrell or your Authorized Cottrell Dealer.

Sincerely,
Daniel Browne / Warranty Coordinator
800-827-0132 ext 301



November 18, 2011

Service Bulletin #SB012

Subject: Trailer Skid Roller Flange Bolts

Models Affected: Strap Units With Production/Conversion Dates Between May 2010 and Mid-November 2011 Having Certain Configurations of the Bottom, Rear-Most Deck of the Trailer

Instructions:

1. See enclosed photographs.
2. Inspect skid transfer ball flanges inside loading skid pocket on the rear-most deck of the trailer to see if skid ball flanges and skid ball are still intact.
3. If parts are missing, replace missing parts using the longer bolts as indicated below.
4. If all parts are intact, but bolts are less than $\frac{3}{4}$ inch long, replace the existing (shorter) bolts with 10 x 24 x $\frac{3}{4}$ bolts and Flex Lock nuts as seen on the enclosed photographs.

Parts Required:

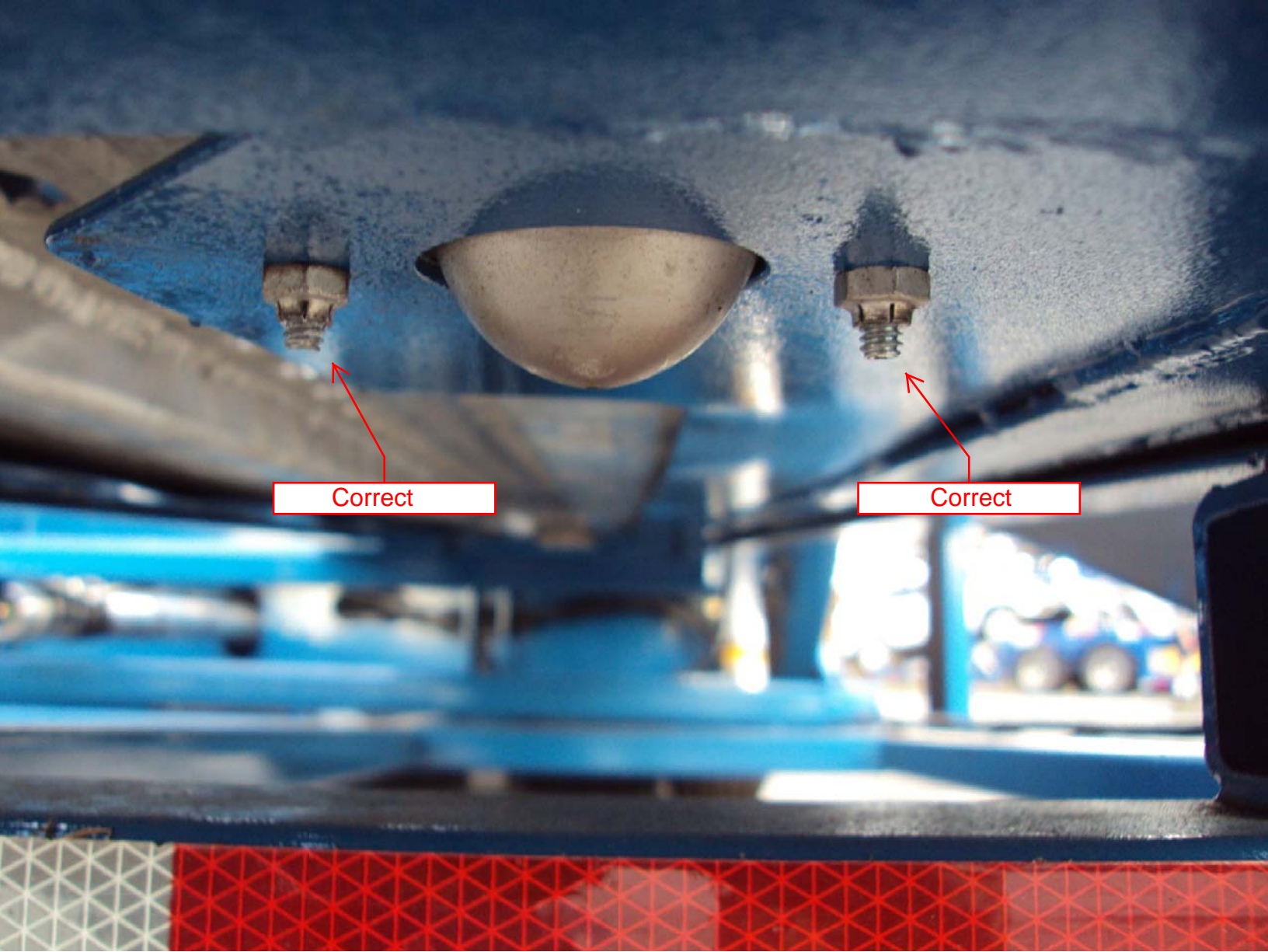
1. Quantity of 8, 10 x 24 x $\frac{3}{4}$ machine bolt
2. Quantity of 8, 10 x 24 Flex Lock Nut

2125 CANDLER ROAD, GAINESVILLE, GA 30507
PHONE (770) 532-7251, FAX (770) 535-2831
WWW.COTTRELLTRAILERS.COM



Incorrect

Incorrect



Correct

Correct