



May 2, 2011

Dear Cottrell equipment owner:

You will find enclosed Service Bulletin #SB010 for installation of a grab handle and a hand hold in the catwalk on the headramp.

Cottrell is installing a grab handle and hand hold in the catwalk to better assist the driver when ascending and descending from the rear-upper deck on the headramp.

Our records indicate that you are the current owner of a Cottrell Headramp (or multiple headramps) that may be affected by Service Bulletin # SB010. The serial number(s) of your tractor(s) are indicated on the enclosed sheet. Please read Service Bulletin #SB010, inspect the headramp(s) and, inspect and install the kit as soon as possible according to the instructions provided.

If you no longer own the tractor(s) identified on the enclosed sheet, please indicate the new owner in the "sold to" section of the enclosure and return it to us at the address below:

Cottrell, Inc.  
2125 Candler Road  
Gainesville, GA 30507  
Attn: Technical Publications

The Cottrell Service Center (800-827-0132), Authorized Cottrell Dealers, or any Authorized Cottrell Warranty Repair Facility may perform the installation for you. You can access a list of these facilities at [www.cottrelltrailers.com](http://www.cottrelltrailers.com) under Service Centers.

Parts required to perform Service Bulletin #SB010 are available through Cottrell Parts Supply (800-827-0132) or from any Authorized Cottrell Dealer.

Cottrell will reimburse a maximum of 1.75 hours of labor per side of headramp modified (some units will require both sides to be modified) at a maximum rate of \$75.00 per hour for the work associated with this Service Bulletin. Requests for reimbursement can be submitted with receipt to the above address or handled directly through the repair facility under normal procedures. This Service Bulletin shall remain open for one (1) calendar year.

Should you have any questions concerning this bulletin, please contact Cottrell or your Authorized Cottrell Dealer.

Sincerely,  
Daniel Browne / Warranty Coordinator  
800-827-0132 ext 301



May 2, 2011

Service Bulletin #SB010

**Subject:           Headramp Rear Upper Fall Protection Modification  
Addition of grab handle and hand hold**

**Models Affected: Certain 3 & 3 1/2 Car Headramps**

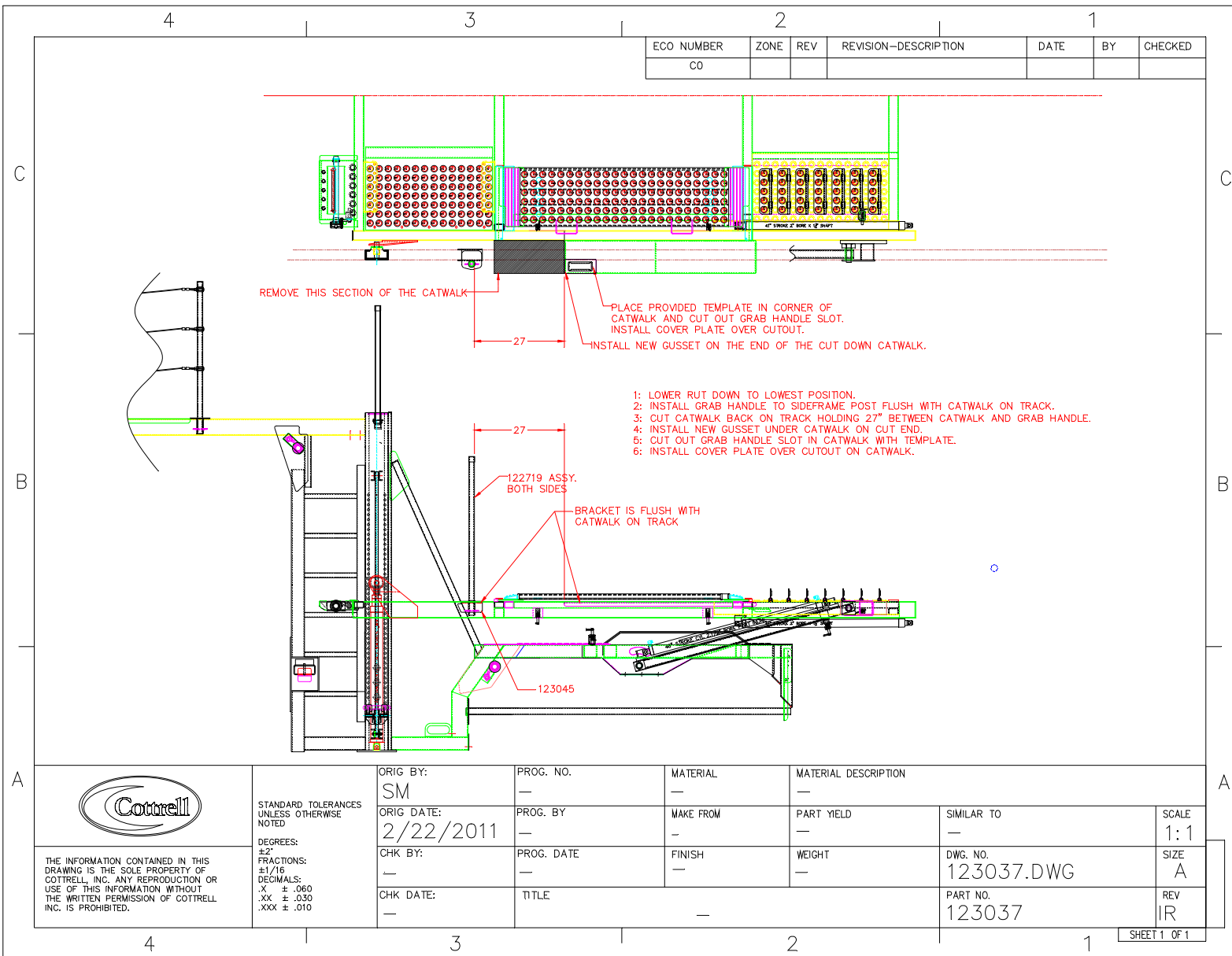
Install Grab Handle and Hand Hold to Rear-Upper deck of Headramp

**Instructions:**

1. Install Grab Handle to diagonal post
2. Remove a section of the catwalk on the rear-upper deck, install gusset, cut hole in catwalk to the dimensions of the template. Install hand hold to catwalk.

Refer also to the attached drawings, #123049/123050/123048/123037, pages 1, 2, 3, and 4 depending on Headramp Model.

2125 CANDLER ROAD, GAINESVILLE, GA 30507  
PHONE (770) 532-7251, FAX (770) 535-2831  
[WWW.COTTRELLTRAILERS.COM](http://WWW.COTTRELLTRAILERS.COM)



ECO NUMBER	ZONE	REV	REVISION-DESCRIPTION	DATE	BY	CHECKED
C0						

ORIG BY: SM	PROG. NO. —	MATERIAL —	MATERIAL DESCRIPTION —		
ORIG DATE: 2/22/2011	PROG. BY —	MAKE FROM —	PART YIELD —	SIMILAR TO —	SCALE 1:1
CHK BY: —	PROG. DATE —	FINISH —	WEIGHT —	DWG. NO. 123037.DWG	SIZE A
CHK DATE: —	TITLE —	—	—	PART NO. 123037	REV IR



STANDARD TOLERANCES  
UNLESS OTHERWISE  
NOTED

DEGREES:  
±2°  
FRACTIONS:  
±1/16  
DECIMALS:  
.X ± .060  
.XX ± .030  
.XXX ± .010

THE INFORMATION CONTAINED IN THIS  
DRAWING IS THE SOLE PROPERTY OF  
COTTRELL, INC. ANY REPRODUCTION OR  
USE OF THIS INFORMATION WITHOUT  
THE WRITTEN PERMISSION OF COTTRELL  
INC. IS PROHIBITED.

SHEET 1 OF 1

**STEP1:**  
**LOWER RUT TRACK DOWN TO LOWEST POSITION**



**STEP 1:**  
**REMOVE ANY LIGHTS AND WIRES FROM DIAGONAL POST**





**STEP 2:  
INSTALL GRAB HANDLE BRACKET FLUSH WITH CATWALK ON RUT**



**STEP 2:**  
**INSTALL GRAB HANDLE IN PIPE AND INSURE HANDLE IS STRAIGHT.**  
**WELD SUPPORT PLATE TO DIAGONAL POST. BE SURE NOT TO WRAP**  
**CORNERS OF TUBE WITH WELD.**



**STEP3:**  
**CUT CATWALK BACK LEAVING A 27" OPENING BETWEEN THE GRAB**  
**HANDLE PIPE AND THE FRONT EDGE OF THE CATWALK.**





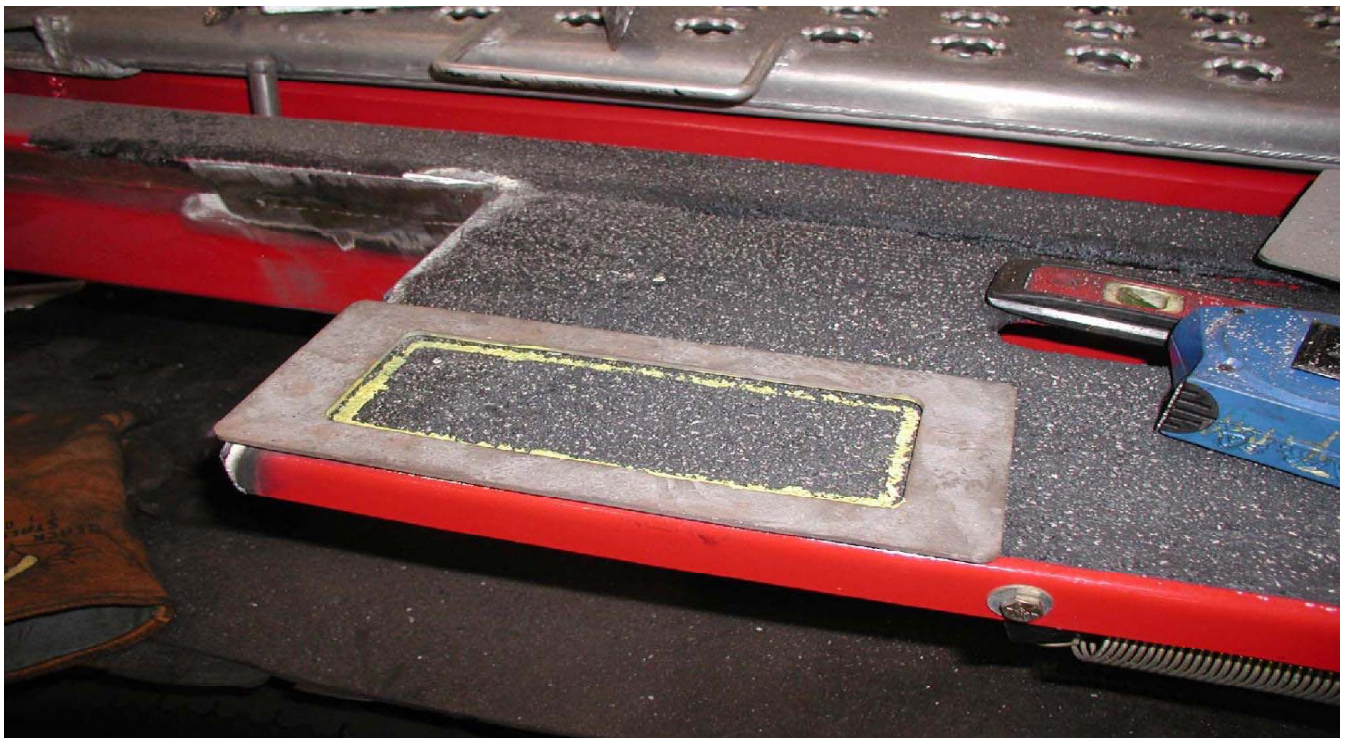
**STEP 3:  
GRIND TUBE AND EDGE OF CATWALK SMOOTH. BE SURE NOT TO GAUGE  
TUBE. USE BUFFING WHEEL IF NEEDED.**



**STEP 4:**  
**INSTALL NEW GUSSET ¼" OFF THE EDGE OF THE CATWALK. WELD 50%.**



**STEP 5:  
PLACE TEMPLAT ON THE OUTSIDE CORNER OF THE CATWALK AND MARK  
HOLE.**





**STEP 5:  
CUT OUT HOLE AND GRIND SMOOTH.**





**STEP 6:  
INSTALL NEW COVER PLATE OVER HOLE IN CATWALK. WELD 50%**

