



February 27, 2014

Cottrell Customer Name
Cottrell Customer Address

This Notice is being sent to you in accordance with the requirements of the National Highway Traffic and Motor Vehicle Safety Act.

NOTICE: Defect Information Report, in accordance with 49 CFR §573.6, concerning the Recall of Certain Cottrell Automobile Transporters Equipped with SurePower Equalizers
NHTSA Campaign No. 14V-028

Dear Cottrell Customer:

Cottrell has decided that a defect which relates to motor vehicle safety exists in certain Cottrell Automobile Transporters equipped with SurePower battery equalizers.

Description of Defect

Based on information provided by SurePower, Inc., a defect exists in SurePower battery equalizers in which the equalizer insulation was found to be capable of conducting electricity once exposed to heat. Once electrically conductive, the material is capable of self-heating and may result in a fire.

Recommended Action

Cottrell recommends that owners of Cottrell Automobile Transporters originally equipped with SurePower battery equalizers follow the detailed instructions on the enclosure and contact Cottrell immediately for replacement parts and any additional assistance that is needed. Replacement parts will be provided to you free of charge. The SurePower battery equalizer model numbers at issue are: 52208, 52208RB, 52210 and 52210RB.

Identification of Affected Parts

The suspect population information containing the trailer serial numbers in your fleet is attached with this notification. Also enclosed are detailed instructions on how to identify the SurePower battery equalizers at issue. Vehicle owners are requested to provide VIN information and In-Service Dates for the corresponding serial numbers for tracking field actions.

The requested information is to be forwarded to:

Chris Nish, Cottrell Warranty Administrator
Phone Toll Free: 1-866-299-2690 ext. 313
E-Mail: cnish@cottrelltrailers.com

Availability of Replacement Parts and Identification/Installation Instructions

Replacement parts are now available. Vehicle Owners or repair facilities should obtain replacement parts by contacting Chris Nish at Cottrell using either of the above methods. Identification/Installation instructions are enclosed with this letter.

Parts, Labor and Handling Allowance

Cottrell will reimburse a flat rate of \$120 per rig for replacement of SurePower Battery Equalizers. Instructions for filing a claim for reimbursement are set forth below. As set forth above, if Cottrell or a Cottrell authorized repair facility completes the replacement/installation work for you, you will not be charged and therefore, no claim for reimbursement needs to be filed.

Claims for Credit

Cottrell will accept warranty claims for inspecting and replacing the suspect SurePower battery equalizers associated with this notice directly from the vehicle owners and repair facilities. In order to receive proper credit, such claims must contain the following information at the time of submission:

- Reference to NHTSA Campaign Number 14V-028
- 17-digit vehicle identification number (VIN)
- SurePower model and serial number
- Vehicle owner's name, address, and telephone number
- Vehicle in-service date
- Vehicle repair date
- Vehicle mileage at the time of repair (if available)
- Repair facility work order number
- Repair facility name, address, and telephone number
- Total labor hours required performing the work, not to exceed agreed amount
- Repair facility hourly rate

Failure to provide complete information will delay processing of the claim.

Communication

If you conclude that Cottrell has not enabled you to remedy this condition in a reasonable time, you may submit a complaint to:

Administrator
National Highway Traffic Safety Administration
1200 New Jersey, S.E.
Washington, D.C. 20590

- or -

Call the toll free Vehicle Safety Hotline: 1-888-327-4236; (TTY: 800-424-9153
or go to <http://www.safercar.gov>

We regret any inconvenience that this situation may cause. Cottrell wants to assure you that we are concerned for customer safety and your continued satisfaction with our products.

Sincerely,

A handwritten signature in dark ink, appearing to read "Jeff Martin", written in a cursive style.

Jeff Martin
Vice President of Sales
Cottrell, Inc.

Enclosures: VIN listing of suspect population information in your fleet
Detailed Identification/Installation Instructions

SurePower Battery Equalizer Recall

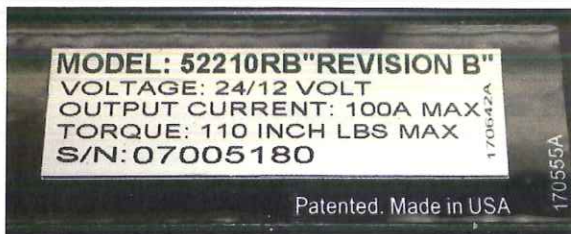
Identification and Installation Instructions

Follow these steps to identify the SurePower battery equalizers at issue, and to complete the recall on your equipment.

1. Verify that your equalizer is covered by the recall. Equalizers covered by the recall will look like the equalizer pictured below:

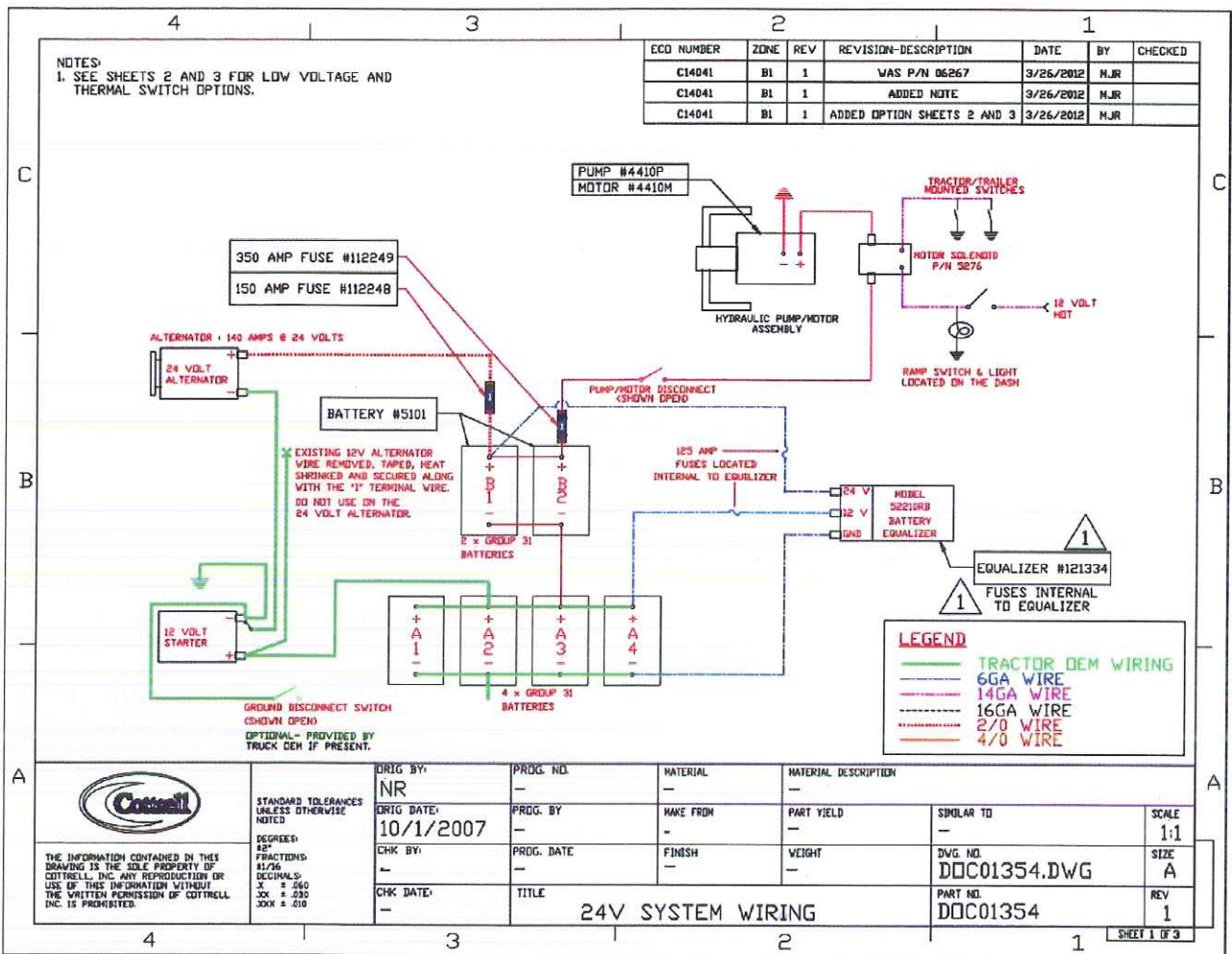


The model of the equalizer will be on the equalizer ID label.



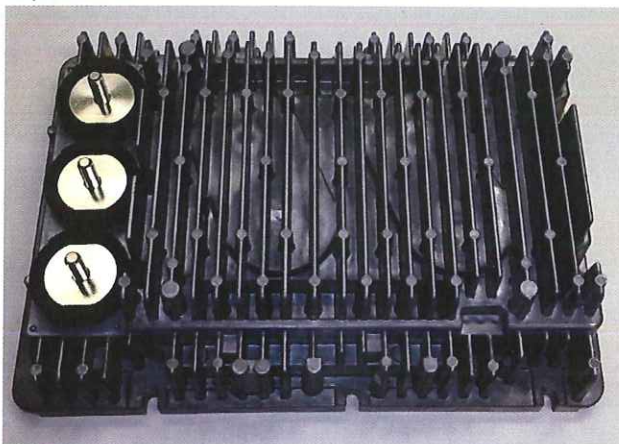
Equalizers with any of the following model numbers are covered by the recall: 52208, 52208RB, 52210, and 52210RB.

2. Disconnect the 12V and 24V power cables as well as the ground cable. Label which cable is attached to the 24V terminal and which one is attached to the 12V terminal to eliminate the possibility of crossing them when reconnecting. Note, these must first be disconnected at the battery terminal ends and then the equalizer ends of the cables to minimize the possibility of electrical shock. See the drawing below for reference.



NUMBER:DOC01354

- Once the cables have been fully disconnected, the equalizer can be removed and replaced. The replacement equalizer will look like the picture below and will drop in to the same space as the original equalizer. Fasteners can be reused unless in poor condition, in which case they must be replaced.



4. Reconnect the 12V and 24V power cables as well as the ground cable, connecting them first at the equalizer and last at the batteries. Note: Some equalizers covered by the recall will have block fuses installed at the 12V and 24V equalizer terminals. Discard these block fuses if so equipped. The replacement equalizer is built with internal fuses that perform the same function.
5. Verify that the 24V system is working properly by checking voltage at the 12V and 24V terminals of the equalizer with a volt meter.