



July 2, 2010

Dear Cottrell equipment owner:

You will find enclosed Service Bulletin #SB008 for headramp inspection and, where appropriate, installation of hardware at the grab handles and hand rail cable poles on certain headramps.

Cottrell recently learned that some owners/operators removed grab handles and/or hand rail cable poles that were not intended to be removed. As a reminder, such unauthorized modifications to Cottrell equipment are in violation of the warnings contained in Cottrell's Operator's Manual.

Our records indicate that you are the current owner of a Cottrell Headramp (or multiple headramps) that may be affected by Service Bulletin # SB008. The serial number(s) of your tractor(s) are indicated on the enclosed sheet. Please read Service Bulletin #SB008, inspect the headramp(s) and, if applicable, install the hardware as soon as possible according to the instructions provided.

If you no longer own the tractor(s) identified on the enclosed sheet, please indicate the new owner in the "sold to" section of the enclosure and return it to us at the address below:

Cottrell, Inc.
2125 Candler Road
Gainesville, GA 30507
Attn: Technical Publications

The Cottrell Service Center (800-827-0132), Authorized Cottrell Dealers, or any Authorized Cottrell Warranty Repair Facility may perform the installation for you. You can access a list of these facilities at www.cottrelltrailers.com under Service Centers.

Parts required to perform Service Bulletin #SB008 are available through Cottrell Parts Supply (800-827-0132) or from any Authorized Cottrell Dealer.

Cottrell will reimburse a maximum of 1 hour labor at a maximum rate of \$75.00 per hour for the work associated with this Service Bulletin. Requests for reimbursement can be submitted with receipt to the above address or handled directly through the repair facility under normal procedures. This Service Bulletin shall remain open for one (1) calendar year.

Should you have any questions concerning this bulletin, please contact Cottrell or your Authorized Cottrell Dealer.

Sincerely,
Daniel Browne / Warranty Coordinator
800-827-0132 ext 301



July 2, 2010

Service Bulletin #SB008

Subject: Headramp Attaching Hardware Update

**Models Affected: Certain Headramps Manufactured
between July 13, 2007 and March 31, 2009**

Inspect the mounting areas of all grab handles and handrail cable poles to determine the method of attachment. If attachment method is not a welded pin or rivet, then please follow the instructions below.

Instructions:

1. At each grab handle mount and handrail cable pole mount, drill the existing hole in both walls of the outer tube to 11/32" (.344").
2. Drive 5/16"-18 x 2 1/2" bolt (part # 120868) into place.
3. Install 5/16" – 18 steel breakaway nut (high torque) (part # 120869). The nut is to have locking patch or use Loctite 242 on nut before running up.

Refer also to the attached drawings, #120873/120874, pages 1 and 2.

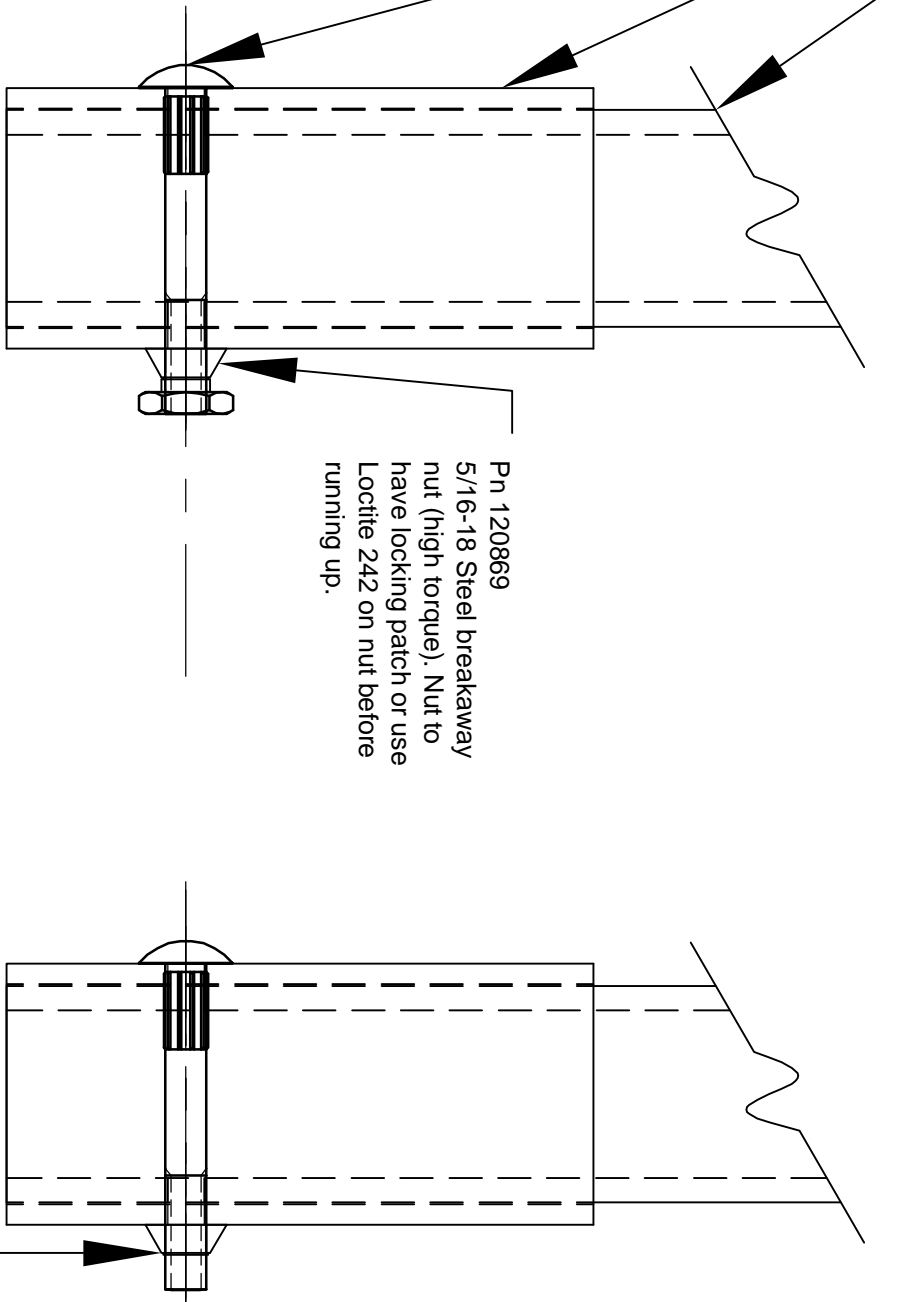
2125 CANDLER ROAD, GAINESVILLE, GA 30507
PHONE (770) 532-7251, FAX (770) 535-2831
WWW.COTTRELLTRAILERS.COM

ECD NUMBER	ZONE	REV	REVISION-DESCRIPTION	DATE	BY	CHECKED
CO						

Cable/handle upright
inner tube

Cable/handle upright
outer tube at bottom

Pn 120868
5/16-18 x 2 1/2" round
head rib neck bolt.
Drill existing hole in
outer tube both walls
to 1/4" (.344") diameter and
drive bolt into place.



Pn 120869
5/16-18 Steel breakaway
nut (high torque). Nut to
have locking patch or use
Locite 242 on nut before
running up.

Torque nut until hex breaks
away. Verify that nut is
fully seated.



THE INFORMATION CONTAINED IN THIS
DRAWING IS THE SOLE PROPERTY OF
COTTRELL, INC. ANY REPRODUCTION OR
USE OF THIS INFORMATION WITHOUT
THE WRITTEN PERMISSION OF COTTRELL
INC. IS PROHIBITED.

STANDARD TOLERANCES
UNLESS OTHERWISE
NOTED

DEGREES:
FRACTIONS:
11/16
DECIMALS:
.XX ± .030
.XXX ± .010

ORIG. BY:	PROG. NO.	MATERIAL	MATERIAL DESCRIPTION	SIMILAR TO	SCALE
BH	X	X			1:1
ORIG. DATE:	PROG. BY	MAKE FROM	PART YIELD	DWG. NO.	SIZE
3/1/2010				XX	A
CHK BY:	PROG. DATE	FINISH	WEIGHT	PART NO.	REV
				120873/120874	IR
CHK DATE:	TITLE				
	Tamper Resistant Post Con.				

4

3

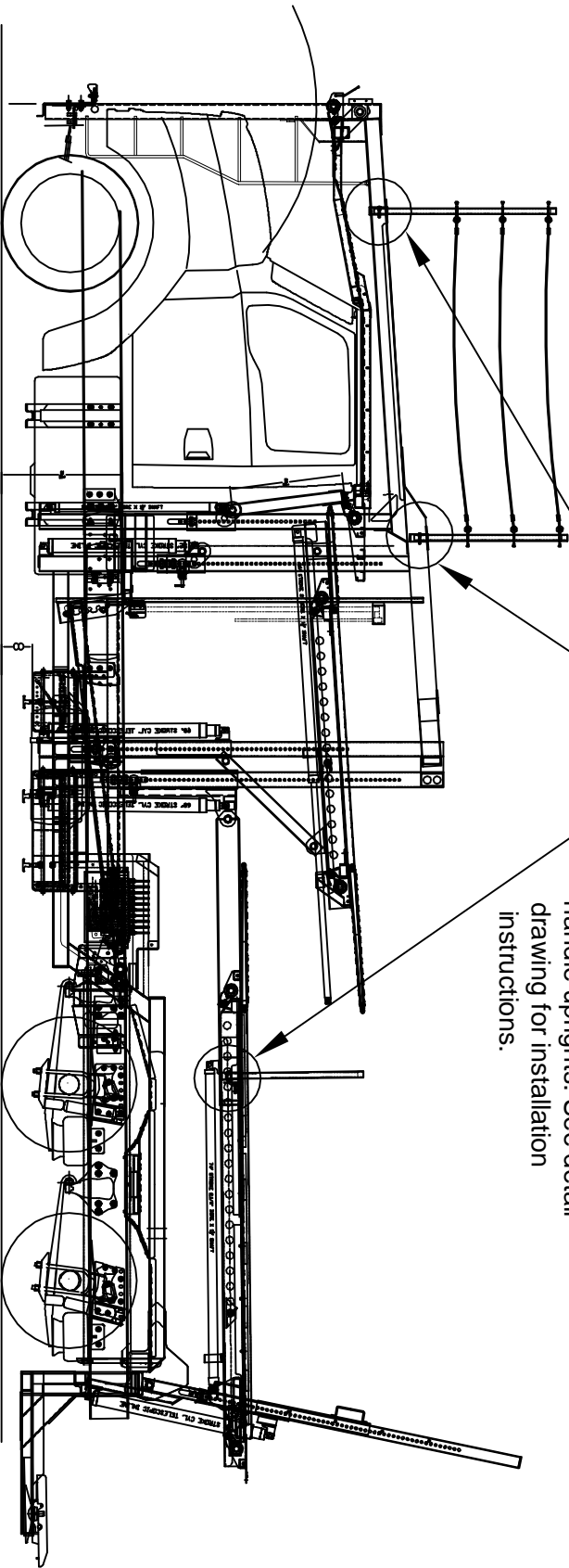
2


1

SHEET 2 OF 2

ECD NUMBER	ZONE	REV	REVISION-DESCRIPTION	DATE	BY	CHECKED
CO						

Typical cable handrail/ grab handle installations requiring updated connection hardware. Install on all cable handrail or handle uprights. See detail drawing for installation instructions.



	STANDARD TOLERANCES UNLESS OTHERWISE NOTED		MATERIAL		MATERIAL DESCRIPTION		SIMILAR TO		SCALE
	DEGREES: ±2	FRACTIONS: ±1/16	PROG. BY	MAKE FROM	PROG. BY	WEIGHT	DWG. NO.	1:1	SIZE
UNLESS OTHERWISE NOTED		PROG. BY	FINISH	PROG. DATE	—	—	—	—	—
X ± .030		ORIG. DATE:	—	—	—	—	—	—	—
.XX ± .030		5/1/2010	—	—	—	—	—	—	—
.XXX ± .010		CHK BY:	—	—	—	—	—	—	—
		CHK DATE:	TITLE		PART NO.		PART NO.		REV
		—	Typ. Hardware Retrofit Locations		120873/120874		120873/120874		IR

